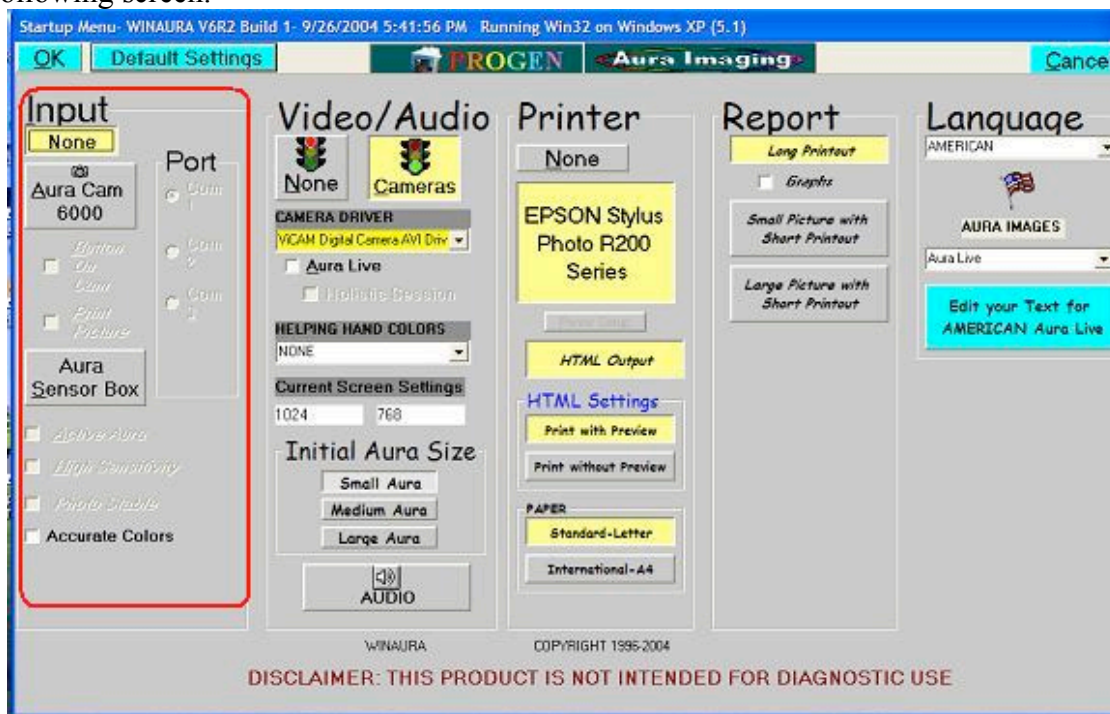


Section 7: Advanced Camera Configuration

Now we must complete a 1-time camera configuration in order to set it to properly function with WinAura.

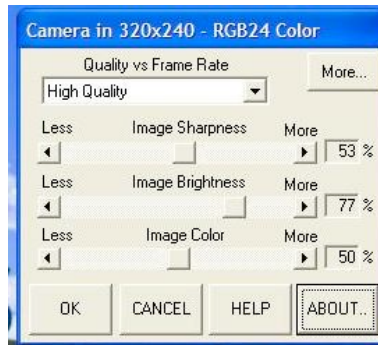
Begin by loading up the WinAura program only this time from the input selection choose **None** and **then** Press **OK** in the top left corner and choose **start** on the following screen.



This will load you into win aura test mode. You should see a purple aura over a camera image. Double click on the image window that contains the aura and what the camera is seeing. This should cause a new box to appear. For optimal quality set image size in this box to 640 x 480. However doing this can cause some performance issues, namely the aura rate will slow down and overall any motion will become less smooth. Click ok to proceed to the next step.



Now this window should appear



On this window you'd make adjustments to brightness, sharpness and color depth. Increasing or decreasing these values will impact the image. It is recommended you leave these settings as they are and move forward by pressing more, which should cause an additional section of this window to appear.

The setting for **Automatic Gain mode** is what is important in this section. Set it to **AGC peak mode** if you are using a solid black background. This setting is ideal for Holistic Session otherwise for normal backgrounds use **AGC Center Average**. Once you complete your selection click **OK** to finalize it. Congratulations your system should be functioning perfectly now.

Camera in 320x240 - RGB24 Color

Configuration Manager	Timed Profiles	Less...
Quality vs Frame Rate High Quality	Image Sharpness 53 % Min Max	
Shutter Speed Control 1/60 th Second	Automatic Gain Mode AGC Peak Mode	
Back Light Compensation 0 %	Brightness Control 77 % Min Max	
Gamma 2.20	Manual Gain Control 87 %	
<input checked="" type="checkbox"/> LED <input checked="" type="checkbox"/> 60Hz <input type="checkbox"/> Freeze <input type="checkbox"/> Negative	<input checked="" type="checkbox"/> Auto WB Tracking Manual White Balance	
<input checked="" type="checkbox"/> Mirror <input type="checkbox"/> Flip	Color Level 50 %	
HELP ABOUT	Red Balance 91 %	
OK CANCEL	Blue Balance 20 %	

Section 8: Advanced WinAura Features

F11 Combine Options

To make the aura brighter or dimmer in comparison to the subject from inside WinAura adjust the **Aura Rate** from the lower right corner of the to slow press the F11 key to bring up the **Combine Options** menu. From this menu you can also adjust the **Softness** of the aura as the **Intensity** of the aura.

